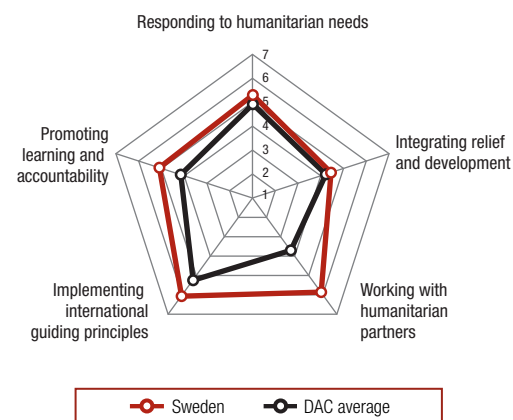


Sweden

Swedish humanitarian aid management is shared between the Ministry of Foreign Affairs, responsible for policy development and coordination of humanitarian aid, and the Swedish International Development Cooperation Agency (SIDA), overseeing implementation and follow-up. In addition, the Swedish Rescue Services Agency under the Ministry of Defence may be called upon to implement humanitarian action. Sweden's humanitarian assistance policy (Humanitarian Aid Policy, 2004) fully embraces the GHD Principles and incorporates a strong rights perspective. The policy provides guidance on preventive measures for natural disasters, conflict prevention and the relationship to development cooperation. Sweden has been a key promoter of the GHD initiative and has formulated a GHD Domestic Implementation Plan. Sweden provides substantial support to multilateral organisations and was the third-largest donor to the CERF in 2006. SIDA offers multi-year funding arrangements running up to three years. SIDA primarily directs its support to Swedish NGOs but can also fund foreign NGOs. A select number of Swedish NGOs also have access to rapid-response funds for contingencies.

Source: Ministry of Foreign Affairs, SIDA, DAC Peer Review for Sweden (OECD, 2005), GHD Domestic Implementation Plan for Sweden.

HRI scores by pillar



HRI results

ADVANTAGES	SCORE	RANK
Responding to humanitarian needs		
Distribution of funding relative to sector, forgotten emergency and media coverage	7.00	1
Working with humanitarian partners		
Funding CERF	7.00	1
Funding UN Consolidated Inter-Agency Appeals	7.00	1
Reducing earmarking	5.63	1
Learning and accountability		
Supporting learning and accountability initiatives	5.62	1

DISADVANTAGES	SCORE	RANK
Responding to humanitarian needs		
Funding to priority sectors	1.00	23
Integrating relief and development		
Consultation with beneficiaries on design and implementation	4.74	14
Consultation with beneficiaries on monitoring and evaluation	4.98	14
Supporting long-term development aims	4.90	15
Learning and accountability		
Encouraging regular evaluations	5.43	13

Overview of humanitarian aid	Sweden		Share of total DAC (%)	
	2005	2006 ³	2005	2006 ³
Total humanitarian aid, of which:	409.7	634.1	4.1	6.0
Bilateral humanitarian aid ¹	261.5	459.4	3.1	5.1
Multilateral humanitarian aid ^{2*}	148.3	133.6	9.6	10.5
Official development assistance	3,362	3,967	2.9	3.5
Funding to Central Emergency Response Fund ^{**}	n/a	41.1	n/a	14.3
Other funds committed under flexible terms ^{4***}	4.9	28.0	33.1	10.0
			DAC average	
Total humanitarian aid per capita (US\$)	45	70	19	24
Total humanitarian aid / official development assistance (%)	12.2	16.0	8.9	9
Total humanitarian aid / GNI (%)	0.115	0.164	0.043	0.0490

Notes: All data are given in current US\$ m unless otherwise indicated.

1 Bilateral humanitarian aid is provided directly by a donor country to a recipient country and includes non-core earmarked contributions to humanitarian organisations but excludes category 'refugees in donor countries' (where 2006 data not available, estimated as average over last four years).

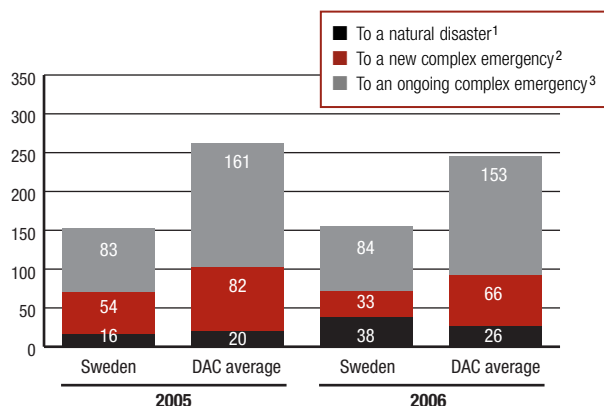
2 Core unearmarked humanitarian flows to UNHCR, UNICEF, WFP, UNRWA, UN/OCHA, ICRC and IFRC.

3 Preliminary; may include official support to asylum seekers in donor country.

4 Consists of IFRC's Disaster Relief Emergency Fund, Common Humanitarian Funds piloted in Sudan and Democratic Republic of Congo in 2006, Emergency Response Funds in 2006 for the DRC, Indonesia, Somalia, the Republic of Congo and Ethiopia and country Humanitarian Response Funds in 2005 for DPRK, DRC, Côte d'Ivoire and Somalia.

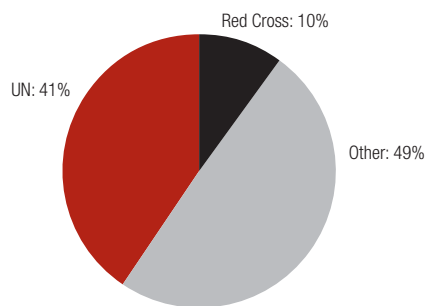
Sources: All data from OECD-DAC except: (*) UNHCR, UNICEF, WFP, UNRWA, UN/OCHA, ICRC and IFRC; (**) OCHA; (***) OCHA, IFRC; Common Humanitarian Fund for Sudan, Common Humanitarian Action Plan DRC 2007, US Federal Reserve.

Response times by crisis type, 2005–2006 (days)



Notes: ¹Average number of days between launch date of a UN Appeal and commitment or disbursement of funds to given ongoing emergencies. ²Average number of days between launch date of a UN Appeal and commitment or disbursement of funds to given new emergencies. ³Average number of days between onset of natural disaster (following CRED dates) and commitment or disbursement of funds to given natural disaster. Source: OCHA/FTS (status early May 2007), Centre for Research on Epidemiology of Disasters (<http://www.cred.be/>).

Main channels of humanitarian aid, 2006



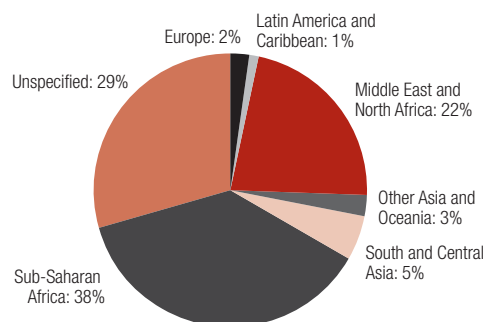
Notes: The UN category encompasses humanitarian receipts by UNHCR, UNICEF, WFP, UNRWA and UN/OCHA including CERF funding; the Red Cross category encompasses humanitarian receipts by IFRC and ICRC. 'Other' is a residual category and includes humanitarian flows to governments, Red Cross national societies, intergovernmental organisations, NGOs, private organisations and foundations. Shares are taken relative to total humanitarian aid reported in 'Overview of humanitarian aid' table. Sources: UN/OCHA, UNICEF, WFP, UNRWA, UNHCR, ICRC, IFRC, OECD.

Funding per emergency, 2006

Crisis	US\$ m	% of total	Inside an Appeal (%)	Outside an Appeal (%)
Palestinian Territories	58.6	16.3	25.4	74.6
Sudan	31.9	8.9	56.5	43.5
Democratic Republic of Congo	19.5	5.4	78.2	21.8
Lebanon July	13.2	3.7	38.3	61.7
Somalia	9.8	2.7	76.7	23.3
Uganda	9.6	2.7	88.7	11.3
West Africa	8.8	2.4	55.3	44.7
Liberia	8.6	2.4	80.4	19.6
Côte d'Ivoire	6.9	1.9	36.7	63.3
Zimbabwe	6.5	1.8	87.0	13.0
Other	186.9	51.9	40.7	59.3
Total	360.3	100.0	45.9	54.1

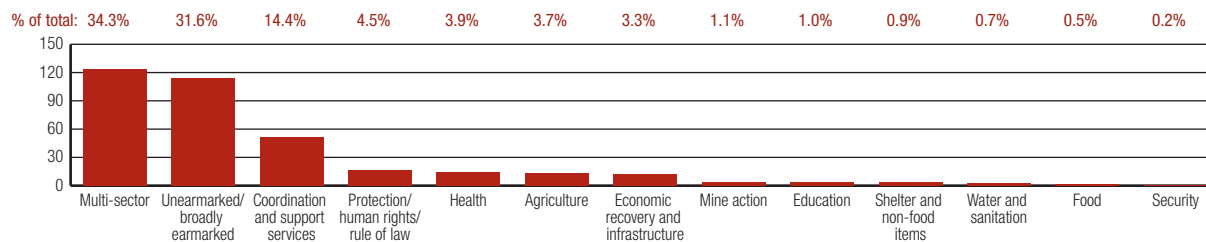
Notes: Category 'Other' includes both provision of unearmarked funds (inside an Appeal to CERF and outside an Appeal) and other miscellaneous flows (only outside an Appeal) if applicable. Source: OCHA/FTS.

Regional distribution of funding, 2006



Note: The number of Appeals financed per region: Europe (1), Latin America and Caribbean (0), Middle East and North Africa (2), Other Asia and Oceania (2), South and Central Asia (4), Sub-Saharan Africa (18), Unspecified (2). Source: OCHA/FTS.

Sectoral distribution of funding, inside and outside an Appeal, 2006 (US\$ m)



Notes: 'Unearmarked/broadly earmarked' category consists of funding not yet applied by recipient agency to particular project or sector. Source: OCHA/FTS.