

HRI MAIN FINDINGS:

- 1 GENDER IS A LOW PRIORITY FOR MANY DONORS AND ACTORS, LEAVING GAPS IN RESPONSES
- 2 POLITICISATION OF AID CONTINUES TO DENY MILLIONS ACCESS TO AID
- 3 PREVENTION, PREPAREDNESS AND RECOVERY ARE DISREGARDED IN AID EFFORTS
- 4 THE CURRENT AID REFORM AGENDA IS INSUFFICIENT TO TACKLE CURRENT AND FUTURE NEEDS
- 5 DONOR TRANSPARENCY AND ACCOUNTABILITY IS WEAK

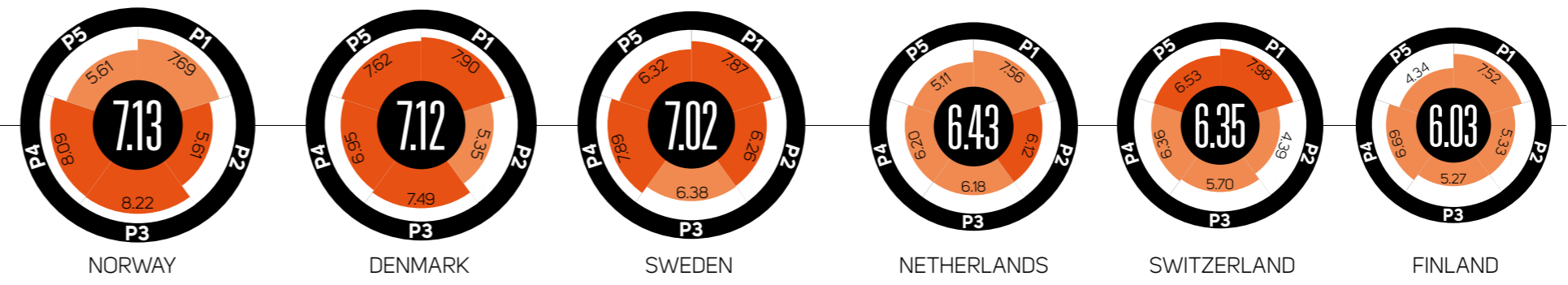
HRI THE HUMANITARIAN RESPONSE INDEX 2011

DONOR CLASSIFICATION

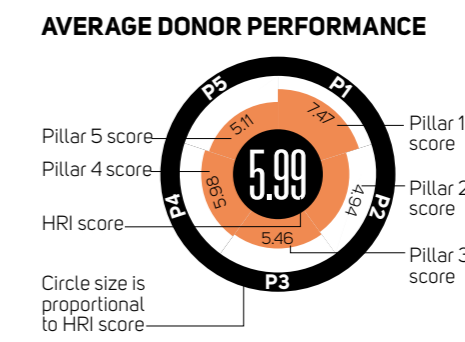
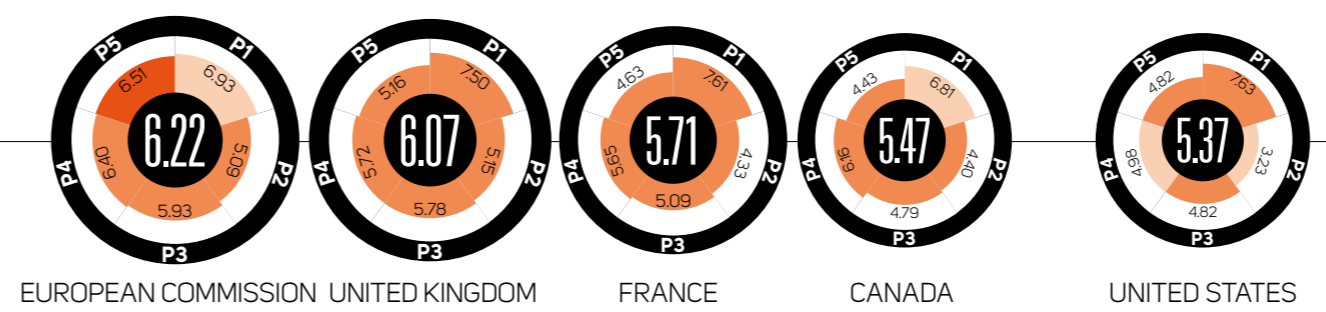
HRI THE HUMANITARIAN RESPONSE INDEX | DONOR CLASSIFICATION



Group 1
PRINCIPLED PARTNERS
Characterised by their generosity, strong commitment to humanitarian principles of neutrality, impartiality and independence, and flexible funding arrangements with partners



Group 2
LEARNING LEADERS
Characterised by their leading role and influence in terms of capacity to respond, field presence, and commitment to learning and improving performance in the sector

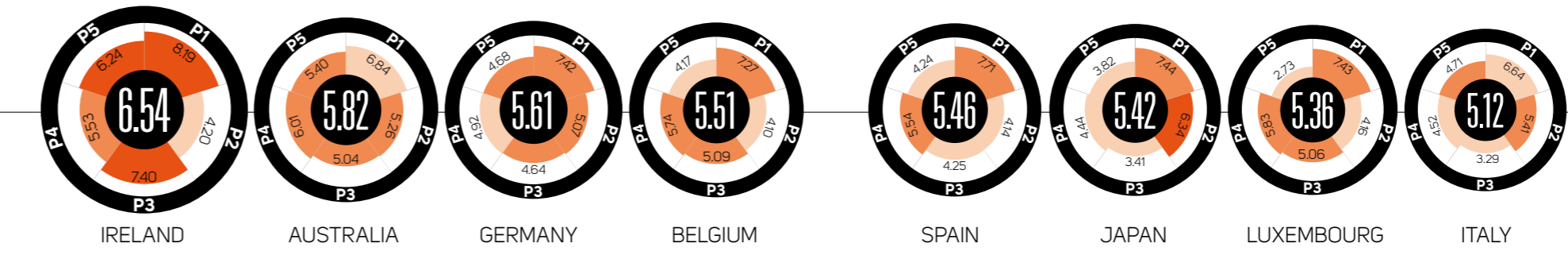


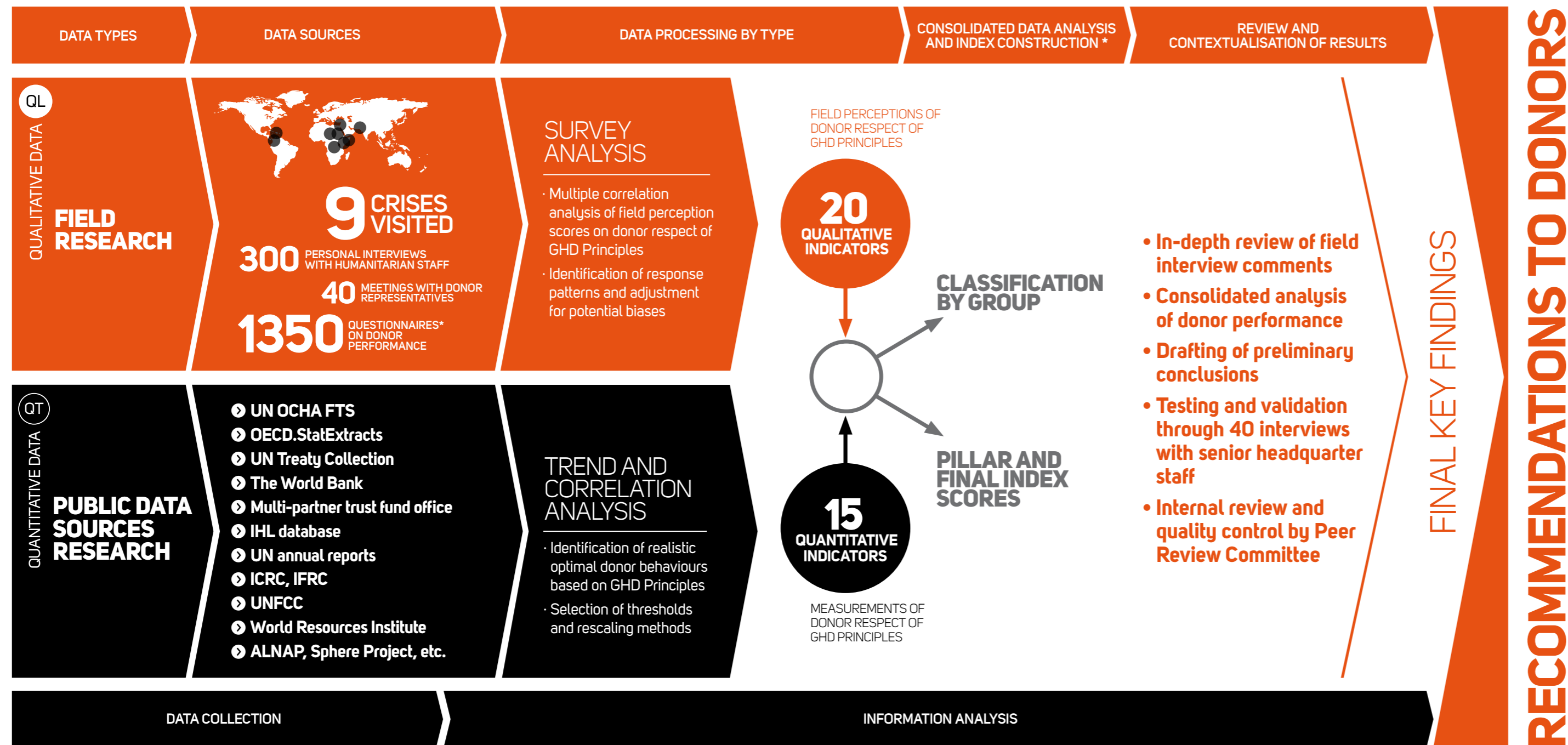
GUIDE TO THE CLASSIFICATION

PILLAR 1 Responding to needs
PILLAR 2 Prevention, risk reduction and recovery
PILLAR 3 Working with humanitarian partners
PILLAR 4 Protection and international law
PILLAR 5 Learning and accountability

All scores are on a scale of 0 to 10. Colors represent performance compared to OECD/DAC donors' average performance rating:
■ Good ■ Mid-range ■ Could improve

Group 3
ASPIRING ACTORS
Diverse in terms of their size and capacities, but characterised by their focus on building strengths in specific "niche" areas, such as geographic regions or thematic areas, and their aspirations to take on a greater role in the sector





THE HUMANITARIAN RESPONSE INDEX (HRI) ASSESSES DONOR GOVERNMENTS' HUMANITARIAN ASSISTANCE AND PROMOTES GREATER TRANSPARENCY, ACCOUNTABILITY AND IMPACT OF AID FOR PEOPLE AFFECTED BY DISASTERS AND CONFLICTS

“ At UN Women we are delighted that the HRI is calling on humanitarian actors and donors to ensure humanitarian actions are adapted to address the specific and different needs of women, girls, men and boys.”

MICHELLE BACHELET,
EXECUTIVE DIRECTOR OF UN WOMEN

“ I encourage donors to place gender concerns at the heart of humanitarian action. The findings and recommendations from the Humanitarian Response Index report deserve thoughtful consideration.”

VALERIE AMOS,
EMERGENCY RELIEF COORDINATOR

HRI THE HUMANITARIAN
2011 RESPONSE INDEX

RESEARCH
PROCESS